

# **STATES OF JERSEY POLICE**



**THIRD QUARTER PERFORMANCE REPORT**

**JANUARY – SEPTEMBER 2008**

## Commentary

Each year, the States of Jersey Police produce three quarterly performance updates and a full annual report to keep the general public, politicians and the local media informed about trends and patterns in recorded crime, disorder and road safety in Jersey. This third quarter performance report covers the nine months ending 30<sup>th</sup> September 2008.

The 2008 Policing Plan included the following comment –

*'If workload in 2008 continues at a similar level to previous years and staffing levels remain close to our authorised strength, the Force should be able to provide an equivalent service to that of 2007. However, any significant increase in workload or staff shortages will be acutely felt amongst front-line units and will have an adverse impact on our ability to deliver the services outlined in this Plan.'*

Performance in 2008 needs to be assessed within this context. The Historic Abuse Enquiry has resulted in a number of experienced officers being seconded away from normal operational duties. In addition, the Force is currently carrying ten vacancies due to officers retiring or leaving the Service and resource levels are further affected by abstractions due to maternity leave, injuries and illness. What this means in practise is that the Force could not deploy about one in nine of its authorised Police Constable posts at the end of September 2008. On the positive side, another 18 recruits have recently been selected and will commence training in January, although they will not be ready for operational deployment until the summer of 2009. Against this background it is pleasing to note that, although the downward momentum in recorded crime has not been maintained, the level of increase has been relatively small.

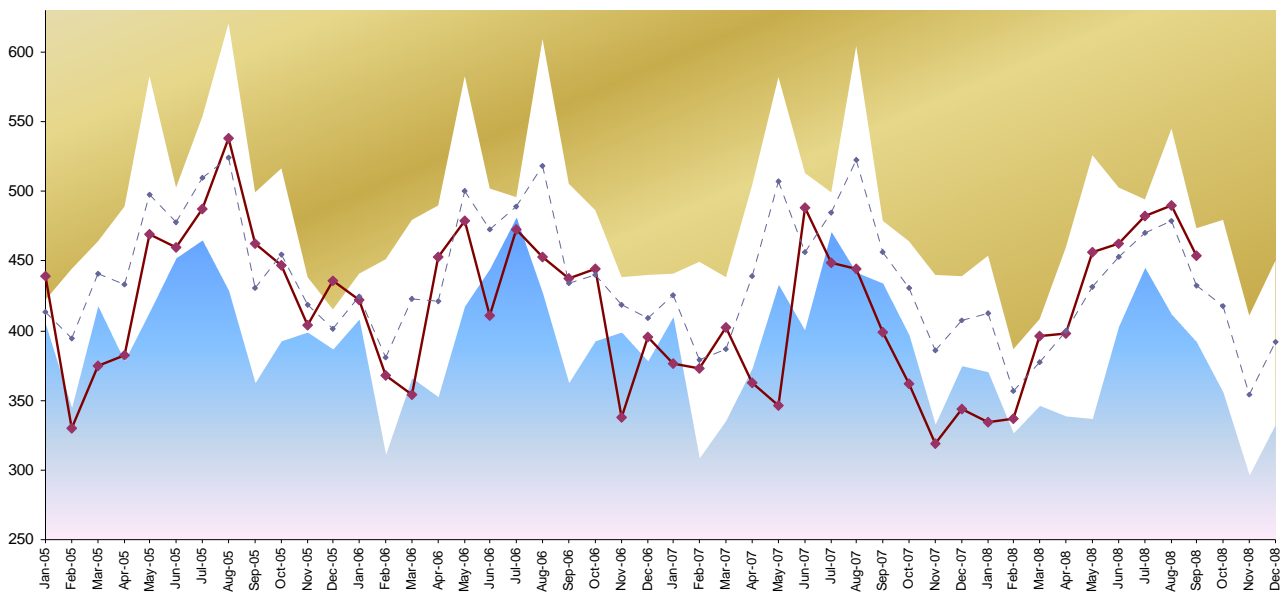
Staff shortages of this nature have a significant impact on our ability to meet public expectations, particularly in respect of daytime patrols and community policing. Addressing these resource issues and making optimum use of those available will be a key feature of the 2009 Policing Plan.

## Overall Recorded Crime

A total of 3,809 crimes were recorded in the first nine months of 2008. This means that overall recorded crime levels in Jersey for the first three quarters of the year are at the same level as the three-year average of for the same period (3,811).

Compared to the same nine months in 2007, overall crime is up by 4.6% but this increase is more than accounted for by changes in Police tactics in tackling street-level drug dealing and use. As a consequence, drugs offences are up significantly on the first nine months of 2007 and it is the generation of these additional statistics by policing activity that has driven the short-term increase in recorded crime.

**Figure 1: Overall Crime by Month, January 2005 – September 2008<sup>1</sup>**



Overall offences levels can be broken down as follows for the main crime categories –

- **Acquisitive crime** such as burglary, vehicle theft and larceny is currently more or less at the same level as it was this time last year (1,489 vs. 1,495 respectively) but it is 9% down on the three-year average (1,638).

### <sup>1</sup> Guide to interpreting Figure 1;

- The solid maroon line shows recorded crime month by month since January 2005.
- The dotted line shows the average number of crimes committed in any particular month in the previous 3-years (eg; Jan 2005 is based on Jan 2002-04).
- If the maroon line is in the blue area, we can be 80% sure that crime levels are exceptionally low for that month compared to what we'd expect based on the previous 3 years
- If the maroon line is in the gold area, we can be 80% sure that crime levels are exceptionally high for that month compared to what we'd expect based on the previous 3 years
- If the maroon line stays within the white area, crime levels are within the expected range based on the experience of the previous 3 years.

- The level of **offences against property** such as malicious damage to buildings or vehicles is 4% up against the first nine months of 2007 (941 offences compared with 907) but still about 2% down against the three-year average (957).
- The number of **offences against the person** such as physical and sexual assaults are up 4% on the first nine months of 2007 (988 vs. 949 offences) and are up 5% against a two-year average of 937

### **Detection Rates**

At the time of writing, the detection rate for the first nine months of 2008 stood at 33%. The sanction detection rate, which represents the number of crimes where an offender has been reported to a Parish Hall Enquiry or charged for court currently stands at 25% for the first nine months of 2008 but should increase further as more continuing investigations are resolved.

# The 2008 Policing Plan

## Strategic Policing Priorities

The Strategic Plan sets out an expectation that the Island's finance industry will receive strong protection against money laundering and other financial crime and that strong protection should be provided against threats to the Island's security. These requirements are directly aligned to two of the Force's key service areas –

- Financial Crime Investigation
- National Security Policing.

These service areas are of such fundamental importance to government strategy that we define financial crime investigation and national security policing as **strategic priorities**.

## Operational Policing Priorities

The two strategic priorities are largely focused on external threats to the Island's security and economy. Whilst the consequences of service failure in either could be devastating, Islanders tend to be more immediately concerned about the community safety issues that affect their day-to-day lives. Hence the States also expect Jersey to be a safe community protected against crime and disorder and our **operational policing priorities** therefore focus on the issues that pose the greatest threat to community safety in Jersey. These priorities reflect our own assessment of crime trends as well as public consultation findings to ensure that we remain in touch with the concerns of our community. Our operational policing priorities for 2008 are -

- Disrupt the supply and distribution of, and demand for, illegal drugs
- Reduce levels of key acquisitive crimes by bringing prolific offenders to justice
- Reduce violence and disorder associated with Jersey's night time economy
- Reduce levels of violence against vulnerable victims by bringing dangerous offenders to justice
- Reduce road traffic injury casualties by targeting the offences that pose the greatest threat to the safety of road users
- To provide positive policing intervention in neighbourhoods where crime and anti-social behaviour impact on quality of life

The rationale that underpins the selection of each of these priorities is set out in the 2008 Policing Plan, which is available on the States of Jersey Police website at [www.jersey.police.uk](http://www.jersey.police.uk) This report provides a six-month update on progress in each of these priority areas.

## **Disrupt the supply and distribution of, and demand for, illegal drugs**

So far this year, operations conducted by the States of Jersey Police Drugs Squad have led to the arrest and charge of –

- 16 people alleged to be involved in the importation and supply of commercial quantities of drugs;
- 20 people alleged to be regularly dealing larger amounts of drugs and potentially making financial gain as a result.

These operations have also yielded drugs seizures worth an estimated £782,000, including heroin and cocaine with an estimated street value of £628,000

The Drugs Squad is the key component of our drugs policing strategy with its focus on criminals organising the importation and distribution of commercial quantities of drugs. Their work is supplemented by pro-active policing by other Police units such as the uniformed shifts and the Proactive Investigation Team, who target street dealers and identify other persons in possession of illegal drugs.

In previous quarterly performance reports, we have emphasised the impact of specific measures intended to target the ‘retail end’ of the drugs market on the crime statistics. A total of 243 drugs offences were recorded in Jersey during the first nine months of 2008. This is significantly higher than both the same period in 2007 and the three-year average.

It must be reiterated that the number of drug users in Jersey and the frequency with which these individuals use or carry drugs, is an unknown quantity and no assumptions about the prevalence of drug use in the Island can be made from Police arrest figures. Normally, these offences only come to light when the police apprehend offenders and so a vigorous targeted campaign on street level drugs offences has yielded the expected results. States of Jersey Police are confident that the increase in drugs offences recorded demonstrates that this pro-active policy is working rather than signifying an obvious increase in drugs availability.

## **Reduce levels of key acquisitive crimes by bringing prolific offenders to justice**

In the first nine months of 2008, 325 burglaries have been recorded in Jersey, representing a reduction of 2% against the three-year average but an increase of 3% against the same period in 2007. The impact of a small number of prolific offenders is illustrated by the pattern of offences over the course of the year to date -

- for the first five months of the year, levels of burglary in the Island were at their lowest level for five years.
- In June, there were 56 burglaries in the space of a month, representing the worst month on record for over three years. Closer examination of the figures shows that the number of dwellings burgled during this period remained almost unchanged but nearly half of the crimes targeted sheds, lock ups and garages.
- Following a number of arrests, burglary levels dropped dramatically once more and July had fewer burglaries than any year since 1997.
- Since August, the Island has been experiencing relatively high number of burglaries involving entry into people’s houses.

Another significant area for prolific offenders is vehicle crime. In the first nine months of 2008 –

- 174 motor vehicles were taken without the owner's permission in Jersey. This is 24% up against 2007's figure of 140 and is 21% above the three-year average.
- States of Jersey Police have recorded 188 cases of theft from a vehicle so far in 2008. This represents an increase of 25% compared to the three-year average and is 61% higher than the same period last year.
- 236 bicycles were recorded as being stolen or taken without permission in the first nine months of 2007, representing an increase of 19% against 2007 but a 8% reduction against the three-year average

### **Reduce violence and disorder associated with Jersey's night time economy**

In the first nine months of 2008, 253 assaults were recorded as taking place in the streets, pubs and clubs of St Helier between 8pm and 4am. This is a decrease of 12% compared with 2007 and just over 8% down on the two-year average. States of Jersey Police have always warned against jumping to conclusions in the interpretation of this single measure, which must be seen in the context of a range of other indicators. It is therefore important to acknowledge that -

- Calls from members of the public for Police assistance to deal with street violence and disorder are 15% up on last year's figure and are 9% up on the two-year average.
- The number of people seeking medical treatment for assault injuries in the Hospital Accident and Emergency Department increased by 20% compared to the same period last year but is down by just over 1% compared to the three-year average. It is not possible to separate out assault injuries sustained in the night time economy from the overall number of assault injuries occurring at other times of day elsewhere in Jersey and so the hospital figures are not a strict reflection of night time violence in the town.

<b>Figure 2: Recorded Assaults in the Night Time Economy</b>	<b>2008 to date</b>	<b>2007</b>
% of assaults reported by victims themselves	42%	44%
% of assaults reported to the Police by licensed premises	23%	23%
% of assaults reported by third party where victim won't make formal complaint	32%	21%
% of self-reported assaults where victim refuses to make a formal complaint	44%	32%
% of assaults identified by Police patrols or CCTV	14% <sup>2</sup>	10%
% of all assaults where Police investigation identifies a named suspect	74% <sup>3</sup>	78%

### **Reduce levels of violence against vulnerable victims by bringing dangerous offenders to justice**

#### **Public Protection**

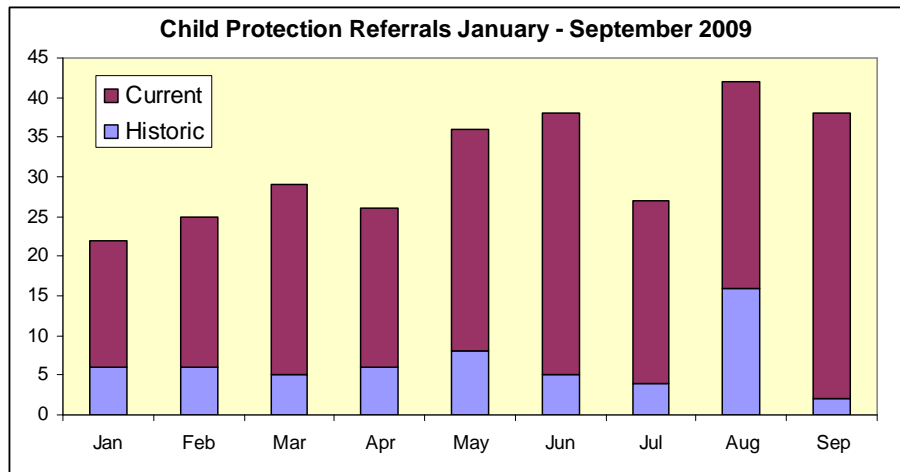
In the first nine months of 2008, the Child Protection Team has received a total of 285 referrals relating primarily to the neglect, physical or sexual abuse of children. This compares with just 113 such referrals in the first nine months of 2007, representing an overall increase of 152%. Cases connected to the ongoing Historic Abuse Enquiry are not included in these figures, although the publicity surrounding that investigation may have had a knock-on effect in encouraging other victims of abuse to come forward.

<sup>2</sup> 18% of assaults in key disorder hotspots were identified by Police patrols or CCTV

<sup>3</sup> This figure represents the number of cases with an identified suspect at the time of publication

Not all referrals result in a prosecution and some are forwarded to the Children’s Service for action or dealt with jointly by the two agencies. Nevertheless, over 100 of these referrals have led to a criminal investigation and, so far in 2008, 18 have resulted in prosecution.

In addition, the Child Protection Team have received 401 notifications from officers who have attended incidents that have given rise to concern for the welfare of a child. This represents a 34% increase on the 300 such notifications in the first nine months of 2007.



▪ **Domestic Abuse**

Domestic abuse is officially defined as:

*‘any incident of threatening behaviour, violence or abuse (psychological, physical, sexual, financial or emotional) between adults, aged 18 or over, who are or have been intimate partners or family members, regardless of gender and sexuality. Family members are defined as mother, father, son, daughter, brother, sister, grandparents, whether directly or indirectly related, in-laws or step family’.*<sup>4</sup>

In the first nine months of 2008, States of Jersey Police have attended 647 domestic incidents compared with 572 such incidents in the first half of 2007.<sup>5</sup> One hundred and sixty eight of these were repeat incidents during 2008 . Given that much domestic violence goes unreported, it is difficult to track trends in the real scale of the problem but officers who attend domestic abuse incidents now conduct risk assessments to help the Force’s Domestic Abuse Officers to prioritise ongoing support for victims deemed to be at most risk. On average in 2008, over 20 high risk relationships came to the attention of the Police each month and, in one in five of these cases, the offender was considered to pose a very high risk to the victim.

**Reduce road traffic injury casualties by targeting the offences that pose the greatest threat to the safety of road users**

In the first nine months of 2008, a total of 1,438 RTCs have been reported to States of Jersey Police, representing an increase of 2.5% compared to the same period in 2007. The number reported to involve injury was 311, showing an increase of 8% again on 2007.

The problems caused by speeding motorists are consistently identified in public surveys as one of the main concerns for Islanders. In the first nine months of 2008, 827 motorists have been reported for speeding in Jersey. This compares to 1,361 for the same period in 2007 when the LASTEC hand held speed camera system was in wider use. Staff shortages have seriously hindered the deployment of LASTEC in 2008, which in any case, cannot be used to its full potential until the Island’s prosecution system can promptly and efficiently deal with the number of offenders it can yield. In the meantime, it should be reiterated that the States of Jersey Police do not have the capacity, using old speed enforcement technology, to deliver an enforcement effort in line with public expectations.

<sup>4</sup> Association of Chief Police Officers (ACPO) Guidance on Investigating Domestic Violence, 2004

<sup>5</sup> Reliable comparison with a three-year average is not possible due to revised definitions of domestic violence and other changes in recording practices. Over the whole of 2007, 788 such incidents were attended.

There were 141 drink-driving offences over this period, which was 8% down compared to January to September 2007 and 19% down on the three-year average. The number of drink drive offences identified as a result of road traffic collisions was 43, representing increases of 23% compared to 2007 and 18% against the three year average for this period.

### **To provide positive policing intervention in neighbourhoods where crime and anti-social behaviour impact on quality of life.**

In the first six months of 2008, States of Jersey Police identified seven 'hotspot' neighbourhoods where there were particular concerns regarding the level of crime or anti-social behaviour. A total of 367 directed patrols were deployed in these areas during peak periods when a Police presence would deter trouble and provide reassurance to local residents.

In the third quarter of 2008, States of Jersey Police focussed patrol resources on four key 'hotspots'. A total of 109 directed patrols were deployed in these areas at times when they were most likely to help reduce problems and improve quality of life for local residents.

The resource pressures under which States of Jersey Police are operating, combined with the demands of policing street violence and disorder in the night time economy, are still having a noticeable impact on the Force's capacity to deliver a pro-active daytime patrol strategy that meets public expectations to see officers on the beat. A study of officer workloads during the daytime indicated that about 85% of the time available is committed to incident response and subsequent enquiries and case management. This leaves very little time for patrol work during daytime hours and most Police patrol effort remains concentrated in the evening and night, particularly in the St Helier night economy.

### **Help maintain and enhance Jersey's reputation as a financial centre of integrity**

For the first six months of 2008 the Joint Financial Crime Unit (JFCU) have received some 1,003 suspicious activity reports (SARs) compared to 1,070 for the same period in 2007. 22% of the SARs received in 2008 relate to tax compared to 34% for the same period in 2007. From April 2007 there was a dramatic increase in the number of SARs relating to tax due to a UK tax amnesty on offshore bank accounts held by UK residents. This tax amnesty is now finished and accounts for the decrease in the number of tax related SARs received in 2008 compared to 2007.

The JFCU continues to receive a steady flow of Requests for Assistance (RFAs). So far in 2008 the Unit has received an average of 62 RFAs per month which is on a par with the first nine months of 2007. The international nature of the role played by the JFCU is reflected by the fact that the RFAs received in the first nine months of 2008 come from countries such as Albania, Chile, Belgium, Brazil, Finland, France, Georgia, Germany, Guatemala, Latvia, Luxembourg, Malta, Macedonia, Nigeria, Norway, Spain, Switzerland, Taiwan, UAE, the USA and Venezuela.

### **Protect Jersey's security and fulfil international and national security obligations**

A total of 2,372 checks were made on passengers passing through Jersey ports between January and September 2008, representing an 8% reduction compared to the same period in 2007.

## Quality of Service

Three principal qualitative indicators are used to monitor our performance. The first relates to the caller's perception of the service provided by the Police Control Room operator who dealt with their call and arranged the response to their incident. Crime victims are also asked for their opinion on the service provided by the officers who attended at the scene and whether they were happy with the feedback they subsequently received on the progress of the investigation. Where a survey respondent expresses concern about the service they have received, a supervisor is assigned to follow up the issue.

### Satisfaction with Police Call Handling

**Period:** January-September 2008

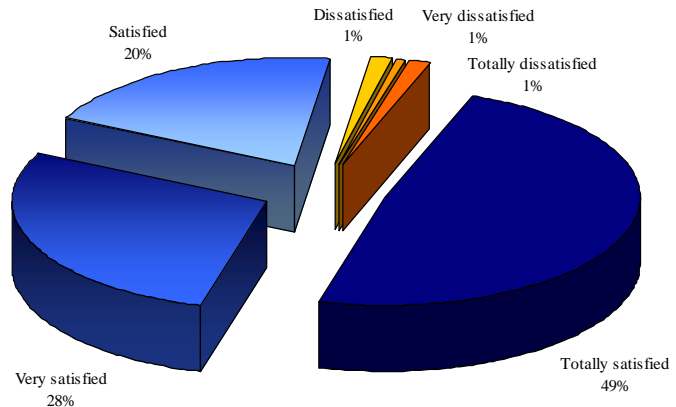
**Target:** At least 70% totally or very satisfied

**Result:** 72% totally or very satisfied

**Overall satisfaction:** 96%

**Response count:** 243

**Comment:** Target exceeded.



### Satisfaction with Service from Officers at the Scene

**Period:** January-September 2008

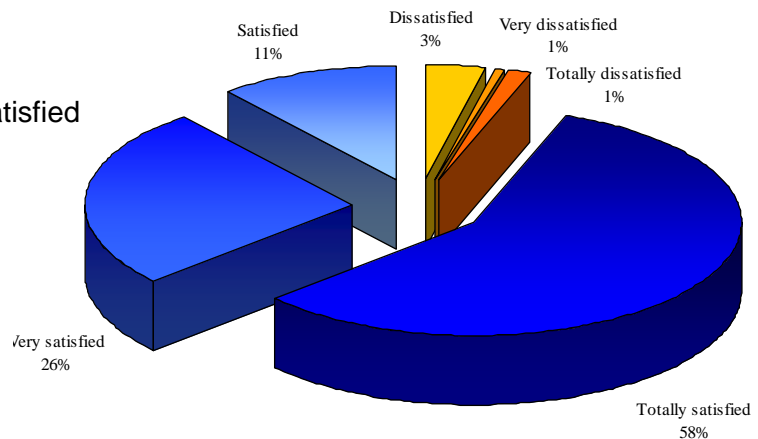
**Target:** At least 70% totally or very satisfied

**Result:** 86% totally or very satisfied

**Overall satisfaction:** 95%

**Response count:** 234<sup>6</sup>

**Comment:** Target exceeded.



<sup>6</sup> Response count differs from call handling and feedback counts because blank, “don’t know” and “neither satisfied nor dissatisfied” response are discounted to focus in respondents providing a definitive opinion on services received. This means that the number of responses can vary per question.

## Satisfaction with Feedback on Progress of the Investigation

**Period:** April - September 2008

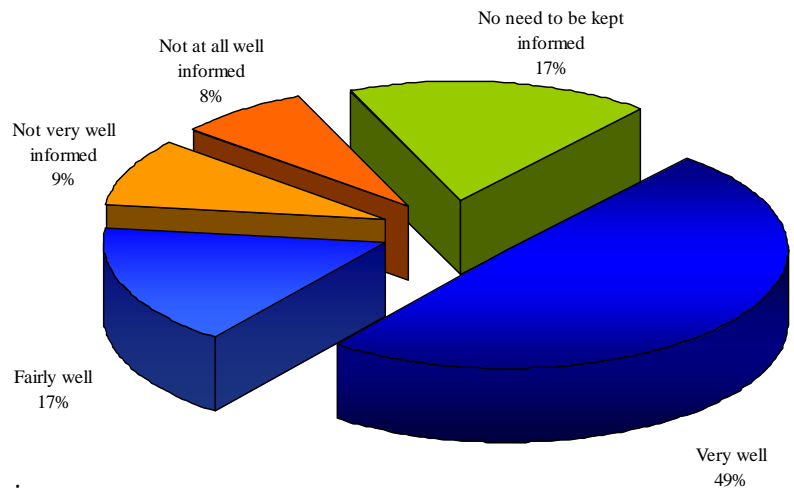
**Target:** None set as this is a new question and improvement targets are set on basis of results received.

**Result:** 59% very well informed<sup>7</sup>

**Overall kept informed:** 79%

**Response count:** 197

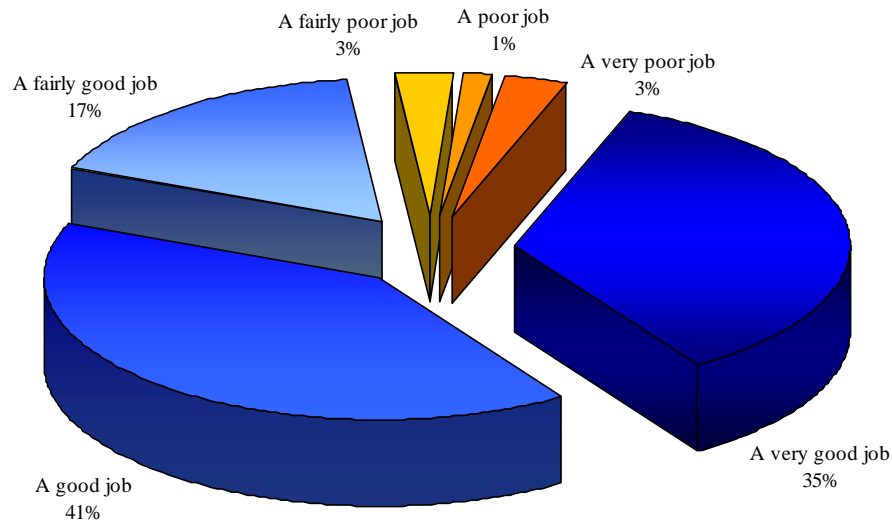
**Comment:** The graph illustrates performance as of 1<sup>st</sup> April 2008 when a new question was introduced to measure whether victims were receiving timely updates from investigating officers as to the progress of the case.



## Overall Perceptions of Police Performance

Our quality of service surveys also ask respondents for their perceptions on the overall policing of Jersey. So far in 2008, 327 respondents have expressed a definitive opinion, of whom 75% thought States of Jersey Police were doing a good or very good job. Overall, 92% of respondents in the first nine months of 2008 thought the Force was at least doing a fairly good job.<sup>8</sup>

**Victim Perceptions of Overall Policing Performance in Jersey, January – June 2008**



<sup>7</sup> This percentage excludes victims who stated that there was no need to keep them informed on progress

<sup>8</sup> Overall percentage for fairly good, good and very good job total reflect the rounding up of decimal places.

## Partnership with the Honorary Police

The Force Control Room continues to draw upon the assistance of our Honorary colleagues where appropriate. The table below shows those incidents for the year to date that have involved the Honorary Police.

Overall, 6% of incidents involved the Honorary Police but outside of St Helier, this proportion increased to an average of 14%.

Parish	Response Code				Incidents with HP Involvement	All Incidents	% of all incidents with HP involvement
	1	2	3	4			
Grouville	5	22	36	9	72	328	22%
St Brelade	14	48	137	23	222	1,135	20%
St Clement	4	31	77	7	119	1,025	12%
St John	2	10	18	7	37	185	20%
St Lawrence	3	16	20	8	47	400	12%
St Martin		5	21	7	33	299	11%
St Mary	1	6	11	3	21	88	24%
St Ouen	2	14	43	10	69	207	33%
St Peter	15	26	62	17	120	586	20%
St Saviour	8	31	59	15	113	1,827	6%
Trinity	3	11	27	9	50	214	23%
St Helier	9	46	81	10	146	11,142	1%
<b>Total</b>	<b>66</b>	<b>266</b>	<b>592</b>	<b>125</b>	<b>1,049</b>	<b>17,436</b>	<b>6%</b>