



# **STATES OF JERSEY POLICE**

**Performance Report  
2<sup>nd</sup> Quarter 2006**

# Recorded and detected crime

## Overall recorded crime

2,500 crimes have been recorded during the first half of the year. This compares to 2,455 for first six months of 2005 (up 1.8%) and to a 3-yr. average of 2,622 (down 4.6%).

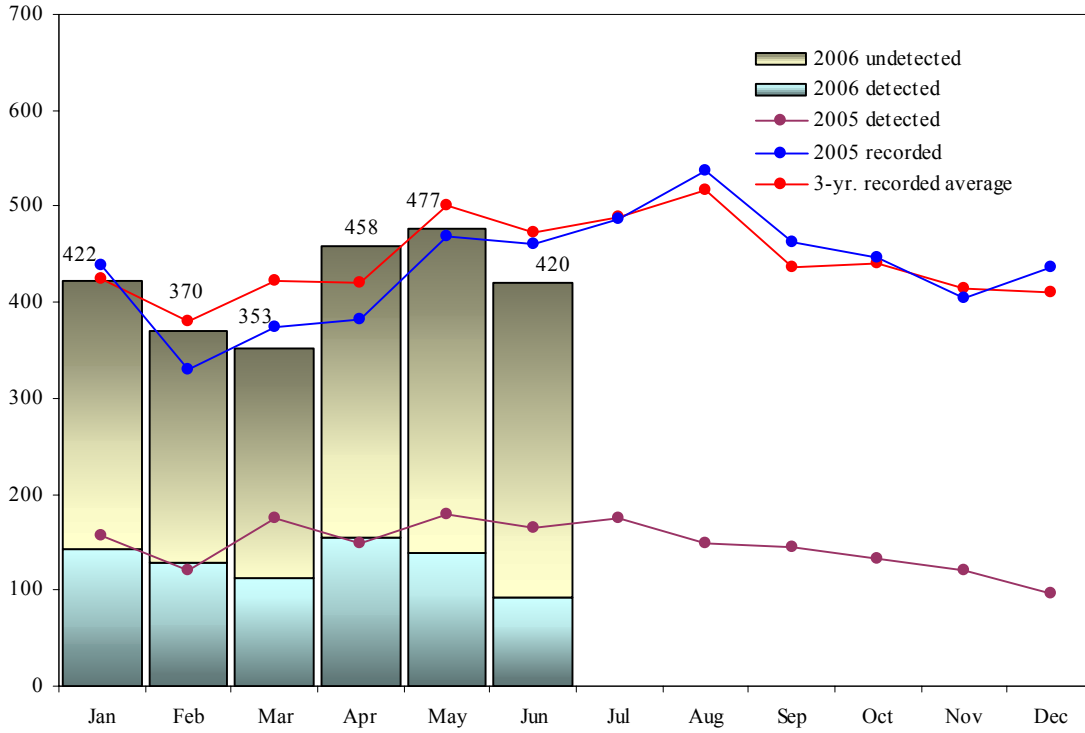


Figure 1. Recorded crime by year and month.

## Detection rates

The detection rate for the first half of the year stands at 37%. There are presently 133 offences awaiting further investigation so detections may increase as time passes<sup>1</sup>.

The difference between ‘sanctioned’ or ‘administrative’ detections has been described in previous reports. The former are of particular interest as they result in a judicial outcome such as a court or Parish Hall hearing. The Force’s sanctioned detection rate is 35% for the first half of 2006 which compares favourably to the UK Government’s target rate of 25%.

## Reported crime

The number of crimes *reported* to the police during the first six months of the year is down 4% on the same period in 2005 (2,962 vs. 3,079) and is 3% lower than the 3-yr. average (3,060)<sup>2</sup>.

## Serious crime

Despite the small increase in overall crime this year to date compared to last, there has been a 5% reduction in the number of serious offences<sup>3</sup> recorded over the same period (333 vs. 351 respectively). There has also been a 5% reduction in serious offences this year in comparison to the 3-yr. average (349). Interestingly, current levels of serious crime are much reduced on those of ten years ago. 2005’s figure was 32% down on that of 1995 (734 vs. 1,081), whilst serious crime during the first six months of 2006 is 9% down on the same period in 1996.

<sup>1</sup> Detection rates are calculated as follows: number of crimes recorded and detected during current year plus the number of previous years’ crimes detected during current year divided by the number of crimes recorded during current year x 100.

<sup>2</sup> Police crime statistics are produced by applying an agreed set of ‘counting rules’ to reported crimes. Sometimes this can lead to differences in the number of reported and recorded offences. In the first half of 2006 more minor assaults met the criteria for being counted as ‘crimes’. This accounts for the small rise in recorded crime when reported crime is down on previous years.

<sup>3</sup> Serious offences include murder, rape, grave and criminal assault, burglary, drug importation, drug supply and intent to supply. Offences of this nature clearly impact dramatically on people’s lives and demand a great deal of police time and resources to conclude.

# ACQUISITIVE CRIME

Acquisitive crime comprises burglary and all kinds of theft including theft of and from vehicles. In 2005, 39% of all crime was acquisitive in nature.

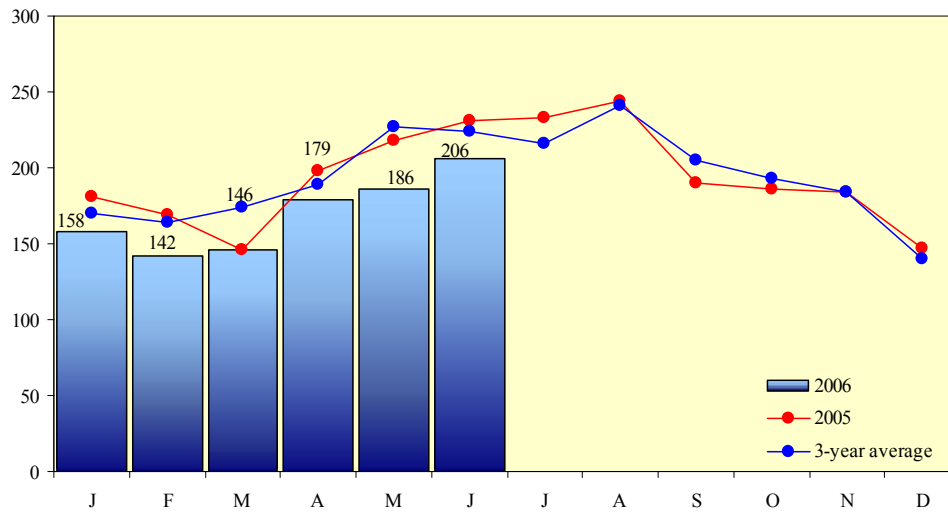


Figure 2. Overall acquisitive crime

To date in 2006, acquisitive crime is 11% below both the level of last year (1,017 vs. 1,143) and the 3-year average (1,148).

- Overall burglary is presently 9% down on 2005's figure (214 vs. 236) and is 7% below the 3-yr. average (230).
- Eighty one domestic burglaries have been recorded during the first six months of the year. This compares to 94 for the same period in 2005 and to a 3-yr. average of 82.
- Seventy five vehicles have been stolen so far this year. This compares to 98 for the same period in 2005 and to 116 for the 3-yr. average.
- Bicycle theft this year is less than half 2005's figure and is much reduced compare to the 3-yr. average (81 recorded incidents vs. 188 and 159 respectively).
- Shoplifting has increased noticeably during the second quarter of the year such that recorded offences are currently 28% up on 2005's figure (132 vs. 103) and are also a little above the 3-yr. average (126).
- Theft of personal items (wallets, mobile 'phones etc.) accounts for nearly 45% of all acquisitive crime. To date in 2006 this type of larceny is at a similar level to that of last year (489 vs. 480) and has not increased on the 3-yr. average (490).

# ROAD SAFETY

As mentioned in the last report, 2005's speeding initiative was very successful with more than 1,000 people processed for driving too quickly. So far in 2006 the number of reported offenders has not quite matched 2005's high figure but there is often a delay in paperwork being placed on the 'case preparation' system from where data is gathered so any conclusions about current speeding levels need to be drawn carefully. The drink-drive and injury RTC figures are more reliable and show 2006 to be similar to that of previous years.

Table 1. Speeding, drink driving and injury RTCs

Offence	January - June		
	2006	2005	3-yr. average
Speeding	569	648	511
All DICs	121	124	133
RTC DICs	22	23	32
Injury RTCs	140	158	153

# Offences against the Person

This category includes all offences of violence and abuse.

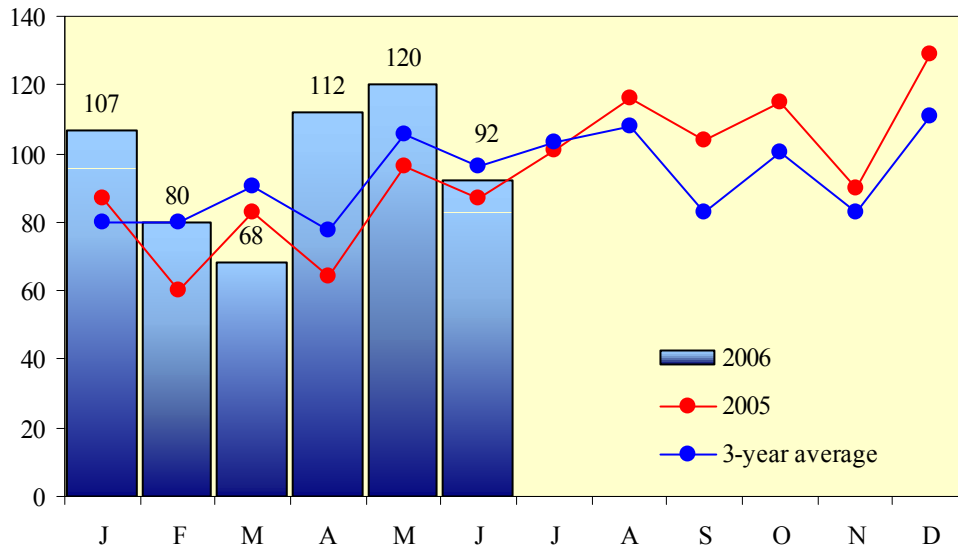


Figure 3. Offences against the person

To date in 2006, the recorded number of offences against the person is 21% above the level of last year and 9% above the 3-yr. average.

- So far this year common assaults are 26% above 2005's level (312 vs. 248) but are only 6% higher than the 3-yr. average (295).
- This year, grave and criminal assaults are a little higher than they were in 2005 (97 vs. 87; c.f. a 3-yr. average of 86).
- For the first quarter of the year violence in the streets, pubs and clubs of St. Helier was at a level similar to that of 2005 and the 3-yr. average (61 incidents vs. 59 and 64 respectively). Unfortunately April and May saw higher numbers of assaults such that for the year to date street violence is 25% above 2005's figure and is 22% up on the 3-yr. average.
- Table 2 below shows domestic assaults for the first half of the year. Although there has been a slight increase in offences this year compared to the 3-yr. average, 2006's figure compare favourably to that of last year. Importantly, the proportion of repeat domestic assaults has not increased this year in comparison either to 2005 or the 3-yr. average.

Table 2. Domestic assaults

Offence	January - June		
	2006	2005	3-yr. average
Common assault	112	115	100
Grave & criminal assault	21	26	22
Total	133	141	122
% repeat offences	20%	23%	20%

## New Shift Patterns and High-Visibility Policing

The reasoning behind changing from a four- to a five-shift system was given in the previous report. Five shifts allow more officers to be available during busy evening periods, particularly in regard to the policing of two areas in town: Bath Street/Minden Place and the Weighbridge/Esplanade/Waterfront. Last year, these two locations accounted for 70% of evening street violence in St. Helier. A sensitive measure of the effectiveness of high-visibility policing can be gained from an analysis of the numerous disorder incidents logged in the Force Control Room. Last year, 23% of such

incidents in the two areas mentioned above originated with officers on the beat or with the Control Room's CCTV operator. This year, however, this proportion has increased to 32%: The reporting of nearly a third of disorder incidents within the two designated zones is now due to direct police action. Additional benefits of high-visibility policing can be seen in regard to assault levels in these two areas. Whilst offences against the person have increased this year Island wide, the number of common and grave & criminal assaults in Bath Street/Minden Place and the Weighbridge/Waterfront combined has fallen slightly (94 in 2006 vs. 96 for 2005).

## Drugs

Our public surveys have shown that drug offending is seen as the most important local policing issue.<sup>4</sup> The Drug Squad has been particularly successful this year in apprehending traffickers who run the supply and distribution of commercial quantities of drugs. Fifteen people have been arrested and charged with such offences so far in 2006. The number for the whole of last year was 20. The 'street' value of drug seizures this year has reached £430,000 of which £39,000 has been heroin, whilst a total of 124 years have been handed down in prison sentences as a result of convictions processed by the Drug Squad. The department now has closer ties with the French authorities and the UK's Serious Organised Crime Agency (SOCA). Three members of Drug Squad have recently become accredited SOCA drug trafficking Expert Witnesses.

## Offences against Property

This category covers all offences against property such as malicious damage and arson. So far this year just over one in four crimes has been an incidence of malicious damage.

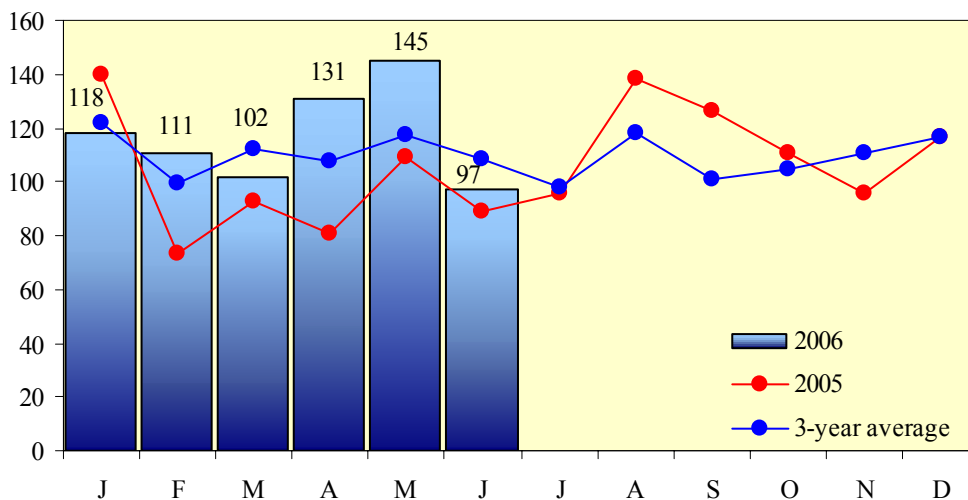


Figure 4. Offences against property

There has been a 20% increase in offences against property during the first six months of the year compared to the same period in 2005 (704 vs. 585 offences respectively). However, this year's figure is only 5% above the 3-yr. average of 668.

<sup>4</sup> States of Jersey Police public surveys, 2001 and 2003.

# Financial Crime

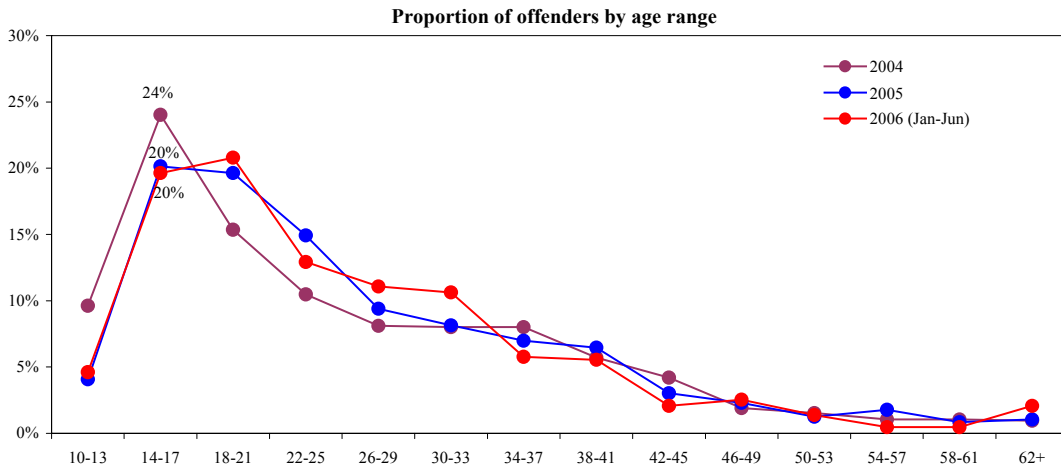
The States of Jersey Police has made clear its commitment to the investigation of financial crime, and the frustration of those criminals and terrorists who seek to use the local finance sector for their own purposes. The Joint Financial Crime Unit currently has 613 cases under investigation and continues, of necessity, to prioritise its workload to deal with the most urgent and high-risk cases.

Table 3. Financial crime investigations

Type of investigation	2006 Jan-Jun	2005 Jan-Jun	3-yr. av. Jan-Jun
Suspicious Activity Reports	501	620	591
Requests from other Jurisdictions	206	211	220 <sup>5</sup>
Local Requests for Assistance	107	165	189

# Youth Offending

As mentioned in previous reports, local crime levels are influenced significantly by youth offending. Those aged 14-17 have, in the past, been responsible for almost a quarter of all recorded offences. So far this year, this age group has accounted for a little under 20% of recorded crime. Although youth *crime* has not increased this year there have been more incidents of anti-social behaviour involving young people. Across five residential zones there has been a 20% increase in youth antisocial behaviour so far this year compared to 2005, although this year's figure is 18% down on that of 2004. The Force continues target such areas with proactive initiatives and special patrols in attempt both to deter youth offending and maintain quality of life for residents.



Year	Proportion of offenders by age range													
	10-13	14-17	18-21	22-25	26-29	30-33	34-37	38-41	42-45	46-49	50-53	54-57	58-61	62+
2002	8%	17%	17%	17%	10%	9%	8%	5%	3%	2%	2%	1%	1%	1%
2003	7%	20%	17%	14%	10%	8%	7%	6%	4%	2%	2%	2%	1%	1%
2004	10%	24%	15%	10%	8%	8%	8%	6%	4%	2%	2%	1%	1%	1%
2005	4%	20%	20%	15%	9%	8%	7%	6%	3%	2%	1%	2%	1%	1%
2006 (Jan-Jun)	5%	20%	21%	13%	11%	11%	6%	6%	2%	3%	1%	0%	0%	2%

Figure 5. Proportion of offenders by age range 2002-2006.

<sup>5</sup> Two-year averages for requests for assistance.

# Customer Focus

## Response Policing

During the first six months of the year the States of Jersey Police has responded to 10,261 incidents of which 388 received an emergency response. The Force views attendance of emergency responses within target times as an important measure of customer focus<sup>6</sup>. We are also concerned with the public's perception of the service provided by our call handlers, the officer who attends the incident scene and the extent to which this officer informs the crime victim of how their case is progressing. All four measures of customer focus are shown in Table 4 below.

Table 4. Customer focus measures.

Key Performance Indicators	2006 Jan-Jun	2005	2004
% of crime victims at least satisfied with the handling of their call for assistance by Police operators	94%	97%	97%
% of emergency incidents attended within target response time	94%	95%	90%
% of crime victims at least satisfied with the service from attending officers	92%	99%	96%
% of crime victims at least satisfied with feedback on the progress of the investigation	74%	78%	88%

Our quality-of-service survey also invites victims of crime to express their opinion of how good a job the Force is doing of policing Jersey.

Table 5. Victims of Crime - Perceptions of Police Performance in Policing Jersey.

	A very good or good job	Mixed	A poor or very poor job
<b>2006 Jan-Jun</b>	<b>71%</b>	<b>26%</b>	<b>3%</b>
2005	76%	21%	2%
2004	73%	22%	4%

The contents of Tables 4 and 5 above suggest that although the Force has reduced its operational cover during some daytime periods so that it can provide a greater presence later in the evening, public perceptions of our service remain favourable.

## Custody

A key function is to provide for the reception, processing and adequate care of prisoners in Police custody.

Table 6. Persons arrested and detained in Custody January – June 2006.

<b>January-June 2006</b>	<b>1,330</b>
% change on Jan-Jun 2005	<-1% (1,332)
% change on 3-yr. average for Jan-Jun	+ 9%

<sup>6</sup> Our target is to attend at least 90% of emergency incidents within 6 minutes if the address is within the town area or 10 minutes when elsewhere in the Island.

## Partnership with the Honorary Police

The Force continues to work closely with the Honorary Service under the provisions of the 2004 Memorandum of understanding. As Table 7 below shows, 20% of incidents outside of St. Helier have been attended by honorary officers so far this year (c.f. 15% for the first quarter of the year). In St. Helier, the emphasis remains on joint operations such as the policing of public events or special initiatives such as Operation Focus and the recent football world cup competition.

Table 7. Reported Incidents involving Honorary Police Partnership

Parish	Jan-Jun 2006		
	Total no. of incidents	No. attended by Honoraries	%
St Helier	7226	134	2%
St Saviour	1154	132	11%
St Brelade	704	185	26%
St Clement	703	100	14%
St Peter	434	130	30%
St Lawrence	273	47	17%
Grouville	212	59	28%
St Martin	188	38	20%
St John	148	43	29%
St Ouen	105	34	32%
Trinity	100	29	29%
St Mary	55	14	25%
<b>Total</b>	<b>11,302</b>	<b>945</b>	<b>8%</b>
<i>Total exc. St. Helier</i>	<i>4076</i>	<i>811</i>	<i>20%</i>